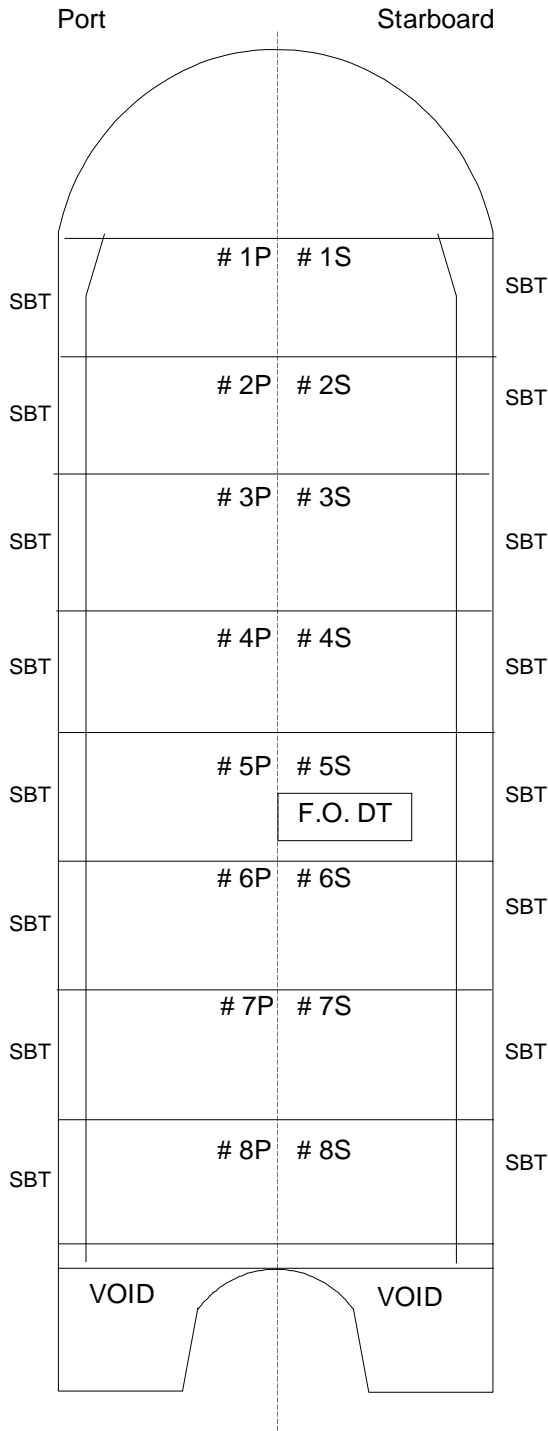


B. NO. 205 - VESSEL -SPECIFIC INFORMATION

CARGO TANK PLAN



PRINCIPAL CHARACTERISTICS

OFFICIAL NUMBER: 1191747
 SERVICE: Tank Barge
 GROSS TONS: 8721
 NET TONS: 5357
 CONSTRUCTION: Double Hull - Welded Steel
 BUILT: Harvey, LA
 DATE BUILT: 01Dec2006

HOME PORT: New York
 DIMENSIONS (FT):
 LOA 430
 Beam 79
 Draft 34

OWNER: B.No.205 Corp.
 58 South Service Road, #150,
 Melville, NY 11747

OPERATOR: Bouchard Transportation Co. Inc.
 58 South Service Road, #150,
 Melville, NY 11747

Tank Capacities (BBL)

# Cargo Tanks			Segregated Ballast	
	Port	Stbd	Port	Stbd
16				
Cargo Tanks				
1P	8,898	1S 8,898	2500	2500
2P	7,047	2S 7,047	2500	2500
3P	7,047	3S 7,047	2500	2500
4P	7,047	4S 7,047	2500	2500
5P	7,047	5S 7,047	2500	2500
6P	7,047	6S 7,047	2500	2500
7P	7,047	7S 7,047	2500	2500
8P	8,659	8S 8,659	2500	2500
	59,839	59,839	20,000	20,000
Cargo	119,678			
Fuel (F.O.)	1,190			
Lube Oil	0			

Maximum Capacity 120,868 BBL (Cargo, Fuel, Lube)
 Ballast 40,000 BBL
 Fresh Water 50 BBL