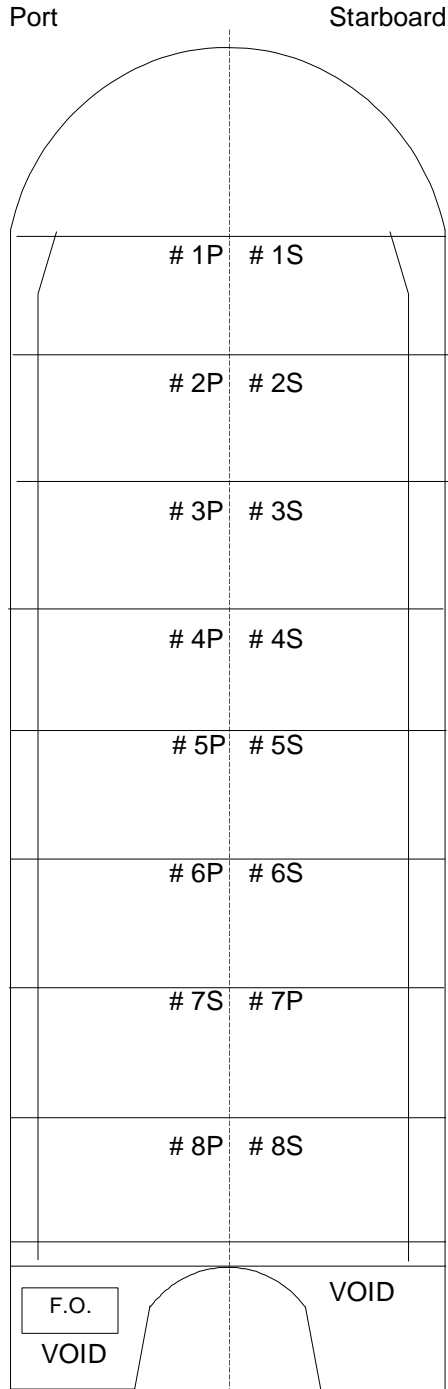


**B. NO. 210 - VESSEL -SPECIFIC INFORMATION**



PRINCIPAL CHARACTERISTICS

OFFICIAL NUMBER: 1037844  
 SERVICE: Tank Barge  
 GROSS TONS: 8225  
 NET TONS: 5317  
 CONSTRUCTION: Double Hull - Welded Steel  
 BUILT: Harvey, LA  
 DATE BUILT: 12/15/1995

HOME PORT: New York  
 DIMENSIONS (FT):  
 LOA 404  
 Beam 78  
 Draft 34

OWNER: B.No.210 Corp.  
 58 South Service Road, #150,  
 Melville, NY 11747

OPERATOR: Bouchard Transportation Co. Inc.  
 58 South Service Road, #150,  
 Melville, NY 11747

Tank Capacities (BBL)

# Cargo Tanks:	16			
Cargo Tanks	1P	6,978	1S	6,978
	2P	7,603	2S	7,603
	3P	7,603	3S	7,603
	4P	7,603	4S	7,603
	5P	7,603	5S	7,603
	6P	6,516	6S	6,516
	7P	6,516	7S	6,516
	8P	7,859	8S	7,859

Cargo	58,281	58,281
Fuel (F.O.)	125	
Lube Oil	0	

**Maximum Capacity 116,687 BBL** (Cargo, Fuel, Lube)  
 Ballast 0 BBL  
 Fresh Water 50 BBL