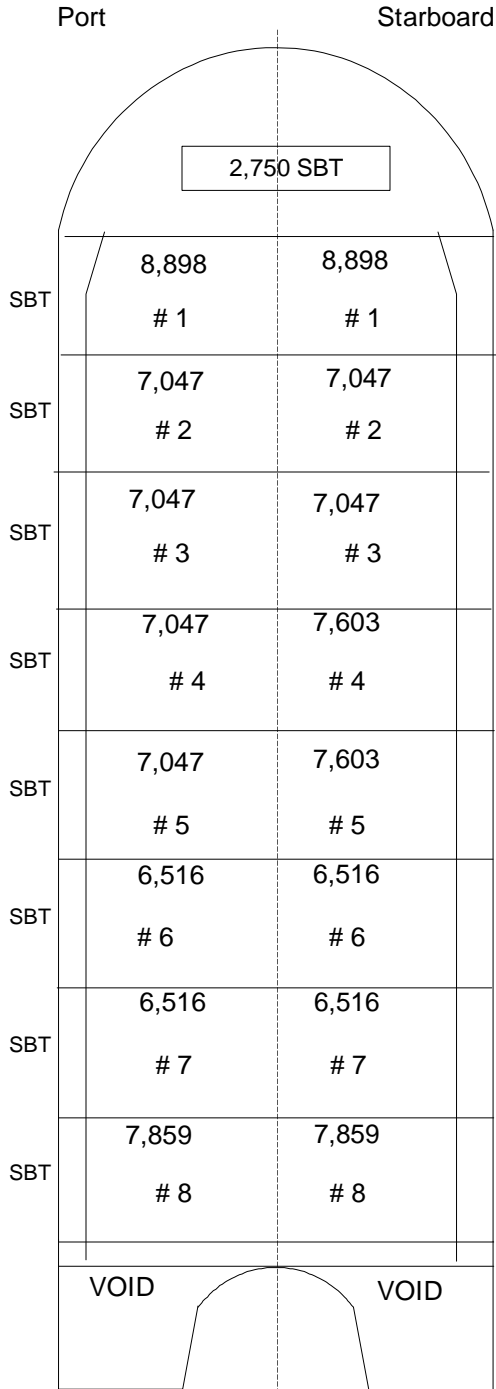


B. NO. 225 - VESSEL -SPECIFIC INFORMATION

CARGO TANK PLAN



PRINCIPAL CHARACTERISTICS

OFFICIAL NUMBER: 1139764
 SERVICE: Tank Barge
 GROSS TONS: 8225
 NET TONS: 5317
 CONSTRUCTION: Double Hull - Welded Steel
 BUILT: Gretna, LA
 DATE BUILT: 6/1/2003

HOME PORT: New York

DIMENSIONS (FT):
 LOA 404
 Beam 78
 Draft 34

OWNER: B.No.225 Corp.
 58 South Service Road, #150,
 Melville, NY 11747

OPERATOR: Bouchard Transportation Co. Inc.
 58 South Service Road, #150,
 Melville, NY 11747

Tank Capacities (BBL)

| SBT | # Cargo Tanks: | | | | | Segregated Ballast | |
|-----|----------------|-------------|--------|--|-----------|--------------------|------|
| | | Cargo Tanks | | | | Port | Stbd |
| | 16 | | | | | | |
| | 1P 8,898 | 1S 8,898 | | | 3725 | 3725 | |
| | 2P 7,047 | 2S 7,047 | | | 2461 | 2461 | |
| | 3P 7,047 | 3S 7,047 | | | 2461 | 2461 | |
| | 4P 7,047 | 4S 7,047 | | | 2461 | 2461 | |
| | 5P 7,047 | 5S 7,047 | | | 2461 | 2461 | |
| | 6P 7,047 | 6S 7,047 | | | 2461 | 2461 | |
| | 7P 7,047 | 7S 7,047 | | | 2461 | 2461 | |
| | 8P 8,659 | 8S 8,659 | | | 3408 | 3408 | |
| | | 59,839 | 59,839 | | Fore Peak | 2745 | |
| | Cargo | 119,678 | | | 21,899 | 24,644 | |
| | Fuel (F.O.) | 1,190 | | | | | |
| | Lube Oil | 0 | | | | | |

Maximum Capacity 120,868 BBL (Cargo, Fuel, Lube)
 Ballast 46,543 BBL
 Fresh Water 50 BBL