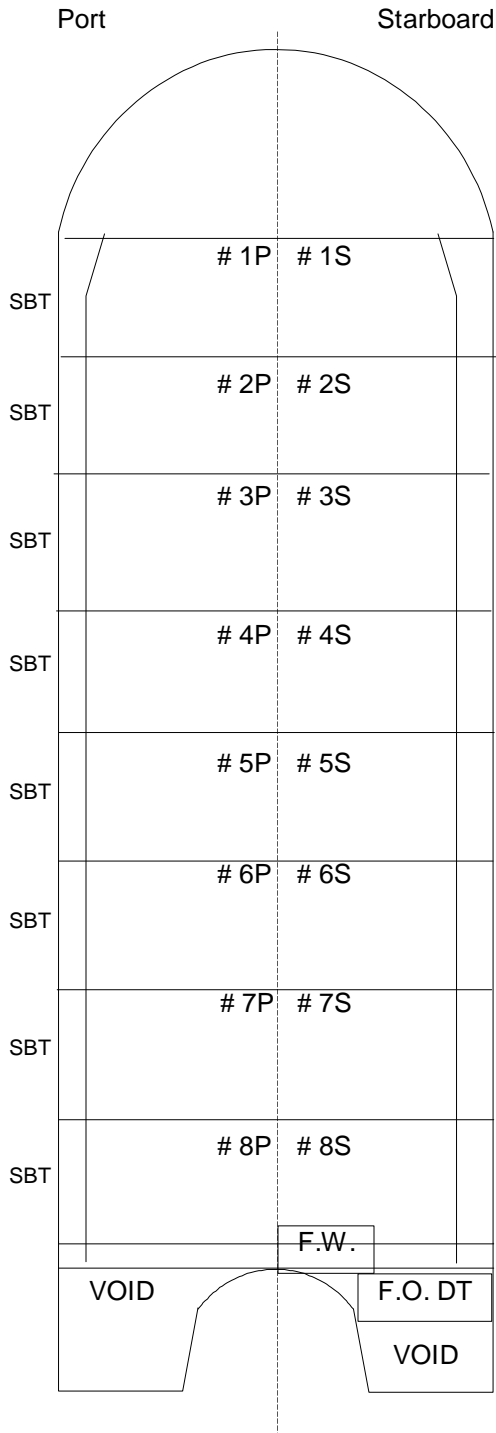


## B. NO. 230 - VESSEL -SPECIFIC INFORMATION



PRINCIPAL CHARACTERISTICS

OFFICIAL NUMBER: 991746  
 SERVICE: Tank Barge  
 GROSS TONS: 9172  
 NET TONS: None  
 CONSTRUCTION: Double Hull - Welded Steel  
 BUILT: Harvey, LA  
 DATE BUILT: 4/1/1993

HOME PORT: New York  
 DIMENSIONS (FT):

LOA 467  
 Beam 80  
 Draft 36

OWNER: B.No.230 Corp.  
 58 South Service Road, #150,  
 Melville, NY 11747

OPERATOR: Bouchard Transportation Co. Inc.  
 58 South Service Road, #150,  
 Melville, NY 11747

Tank Capacities (BBL)

# Cargo Tanks	16		Segregated Ballast	
	Port	Stbd	Port	Stbd
1P	8,446	1S 8,446	2500	2500
2P	9,116	2S 9,116	2500	2500
3P	9,116	3S 9,116	2500	2500
4P	9,116	4S 9,116	2500	2500
5P	9,116	5S 9,116	2500	2500
6P	7,976	6S 7,976	2500	2500
7P	7,976	7S 7,976	2500	2500
8P	8,539	8S 8,539	2500	2500
Cargo	69,401	69,401	20,000	20,000
Fuel (F.O.)	1,190			
Lube Oil	0			

**Maximum Capacity** 139,992 BBL (Cargo, Fuel, Lube)  
 Ballast 40,000 BBL  
 Fresh Water 50 BBL