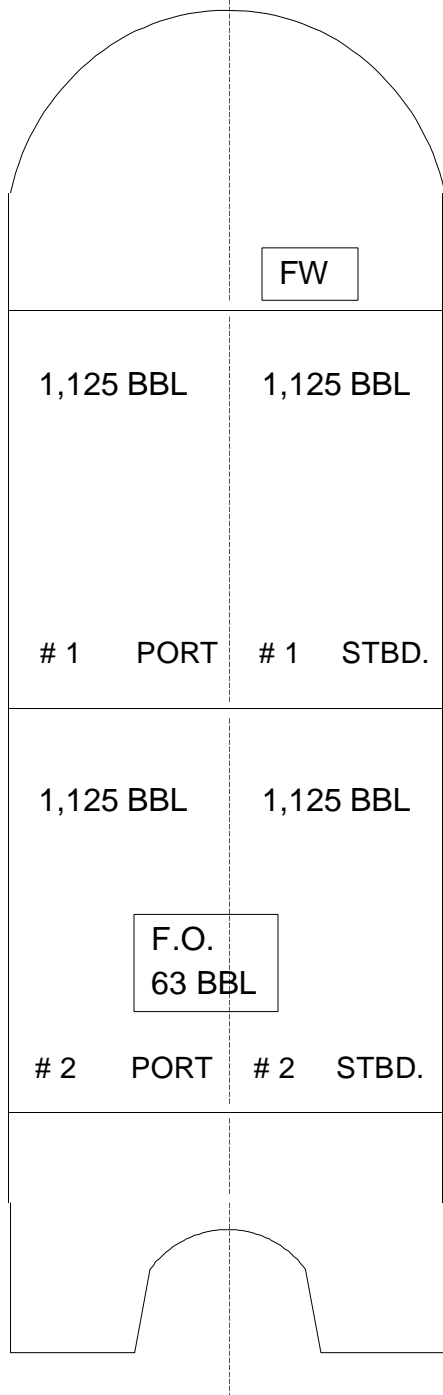


EVENING BREEZE – VESSEL SPECIFIC INFORMATION



PRINCIPAL CHARACTERISTICS

OFFICIAL NUMBER: CG008698

SERVICE: TANK BARGE HOME

PORT: NEW YORK DIMENSIONS:

112'11" x 35' x 12'06" GROSS

TONS: 416

NET TONS: 416

NUMBER OF TANKS: 4, 2 PORT 1 STBD.

CONSTRUCTION:
SINGLE SKIN, WELDED STEEL

BUILT: BALTIMORE, MARYLAND

DATE REBUILT: 1971

OWNER:
Evening Breeze Corp.
58 South Service Road, #150,
Melville, NY 11747

OPERATOR:
Bouchard Transportation Co. Inc.
58 South Service Road, #150,
Melville, NY 11747

MAXIMUM CAPACITIES

TOTAL CARGO, LUBE, FUEL
4,564 Bbls.

CARGO = 4500 BBL

FUEL = 63 BBL Tank C/L in
machinery deck house.

LUBE OIL = 0

BALLAST = 0

FRESH WATER = 720 Gals. Port side
of C/L in Living Quarters.